

Plotting Scheme, Maan, Pune.

- Plotting scheme of 26 Plots on 5 Acre land.
- Plot Size of approx. 500 sq.mt.
- Fencing to Individual Plots.
- Compound to entire Project with Security Cabins.
- Provision of Road, Solar Street Lights, RO Water Plant and Electricity.
- Club House and Children Play Area.

Plotting Scheme, Maan, Pune.



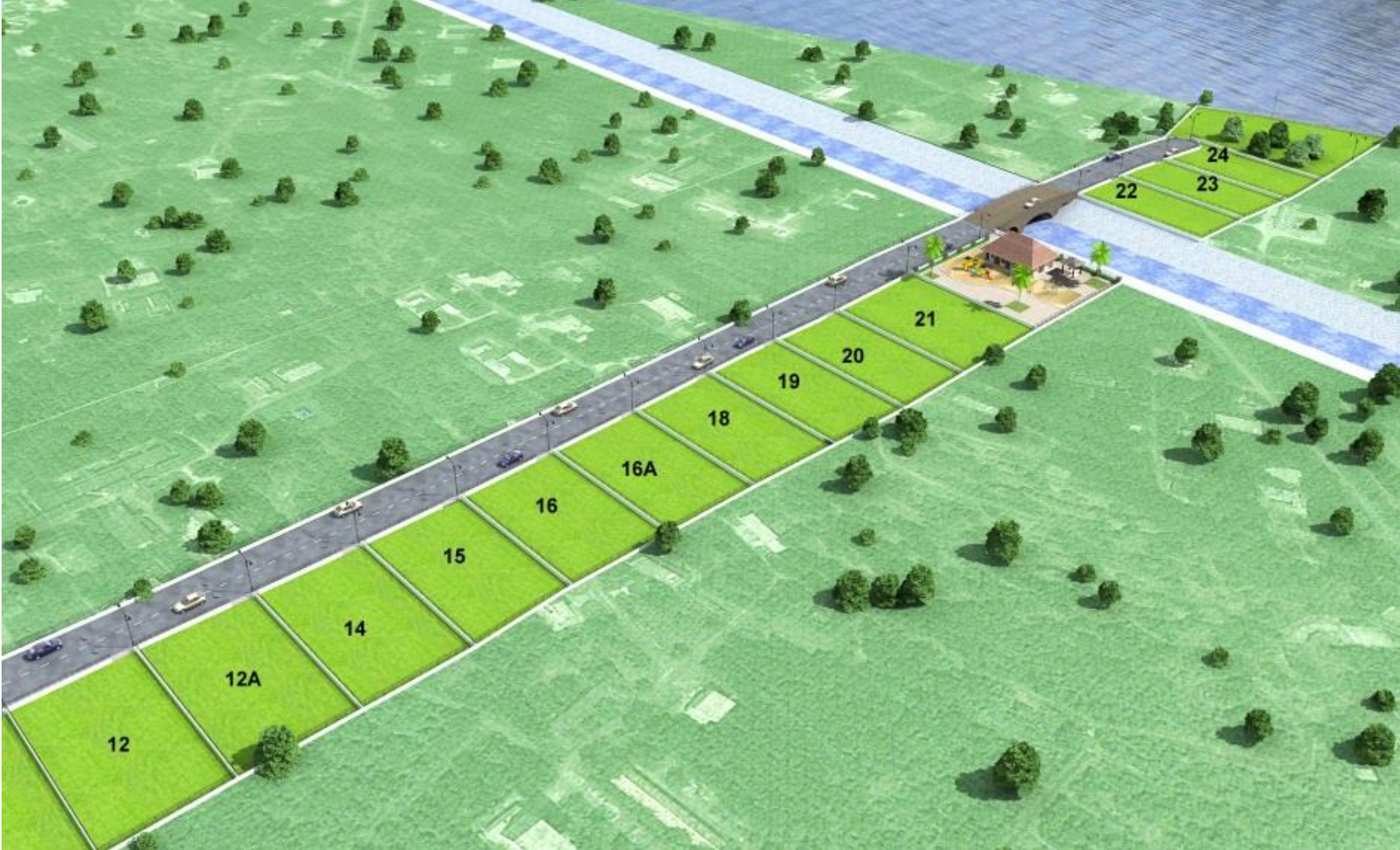
Plotting Scheme , Maan, Pune.

Plotting Scheme, Maan, Pune.



Plotting Scheme , Maan, Pune.

Plotting Scheme, Maan, Pune.



Plotting Scheme , Maan, Pune.

Plotting Scheme, Maan, Pune.



Plotting Scheme , Maan, Pune.

Marvela



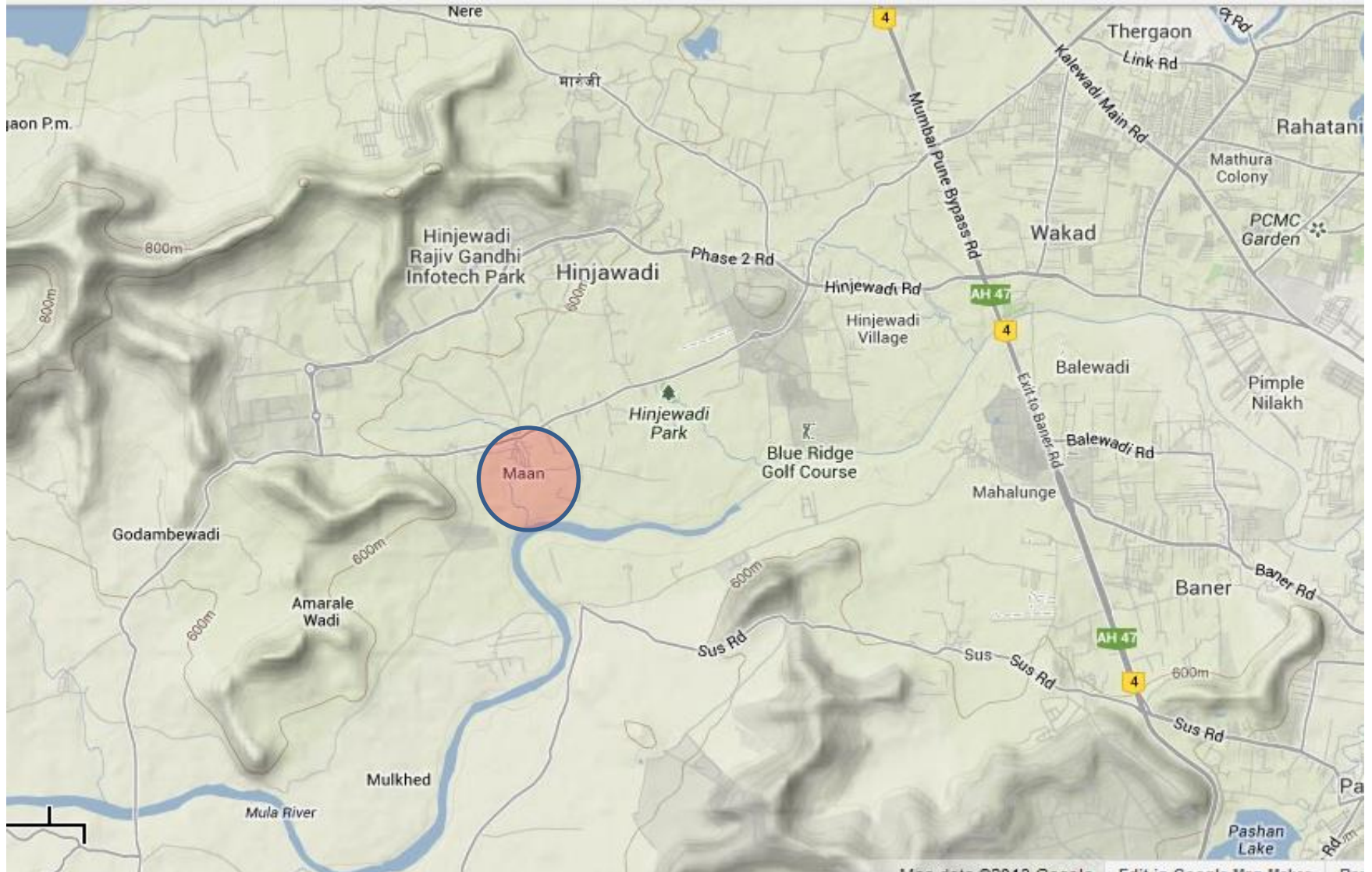
- “**Marvela**” - signature housing scheme in Goa.
- 4 luxury and spacious flats.
- Enjoy the feeling of owning a private villa in an apartment.
- Picturesque location with calm and serene atmosphere.

Residential Project at Maan, Hinjewadi, Pune

Strategically Located Near **Hinjewadi** which is India's premier IT Park. Project is located along the outskirts of Pune, site consists of **7 / 10 / 15 storey** premium towers. Each house has the finest amenities. It is away from the hustle and bustle of the city, traffic snarls and pollution.

Residential Project at Maan, Hinjewadi, Pune

Location Map



Residential Project at Maan, Hinjewadi, Pune

Project Description

- Residential & Commercial Project Spread over **3.6 Acres** of land.
- Total Construction of approx. **3 lac Sq. Ft.**
- Project of **278 flats** of 1, 1½, 2, 2½, 3 BHK & Row Houses.
- Stilt and open car parking
- Club House and other amenities

Residential Project at Maan, Hinjewadi, Pune

Layout Plan



LAYOUT PLAN AT VILL. MAAN, TAL. MULSHI, DIST. PUNE

Residential Project at Maan, Hinjewadi, Pune Aerial View



Residential Project at Maan, Hinjewadi, Pune Aerial View



Residential Project at Maan, Hinjewadi, Pune Aerial View



Residential Project at Maan, Hinjewadi, Pune Entrance View



Residential Project at Maan, Hinjewadi, Pune Aerial View (Night-View)



Projects @ BCIPL...



Residential Scheme @ Goa

Pilerne, North Goa, Enroute to Calangute, Baga

Residential Scheme @ Goa

Pilerne, North Goa, Enroute to Calangute, Baga

Project 440, Goa



Residential Scheme @ Goa

Pilerne, North Goa, Enroute to Calangute, Baga

Project 440, Goa: Elevation



Residential Scheme @ Goa
Pilerne, North Goa, Enroute to Calangute, Baga
Project 440, Goa: Elevation Option 2



Residential Scheme @ Goa
Pilerne, North Goa, Enroute to Calangute, Baga

Residential Project at Pilerne, North Goa :

- Residential Project on 440 Sq. Mts. plot.
- Project of 4 fully Air-conditioned semi furnished flats.
- Flat size : Ranging from 110 to 125 Sq. Mts. Saleable.
- Car parking facility available.



Residential Scheme @ Bainguinim, Goa

Village Bainguinim, North Goa

Residential Scheme @ Bainguinim, Goa
Village Bainguinim, North Goa

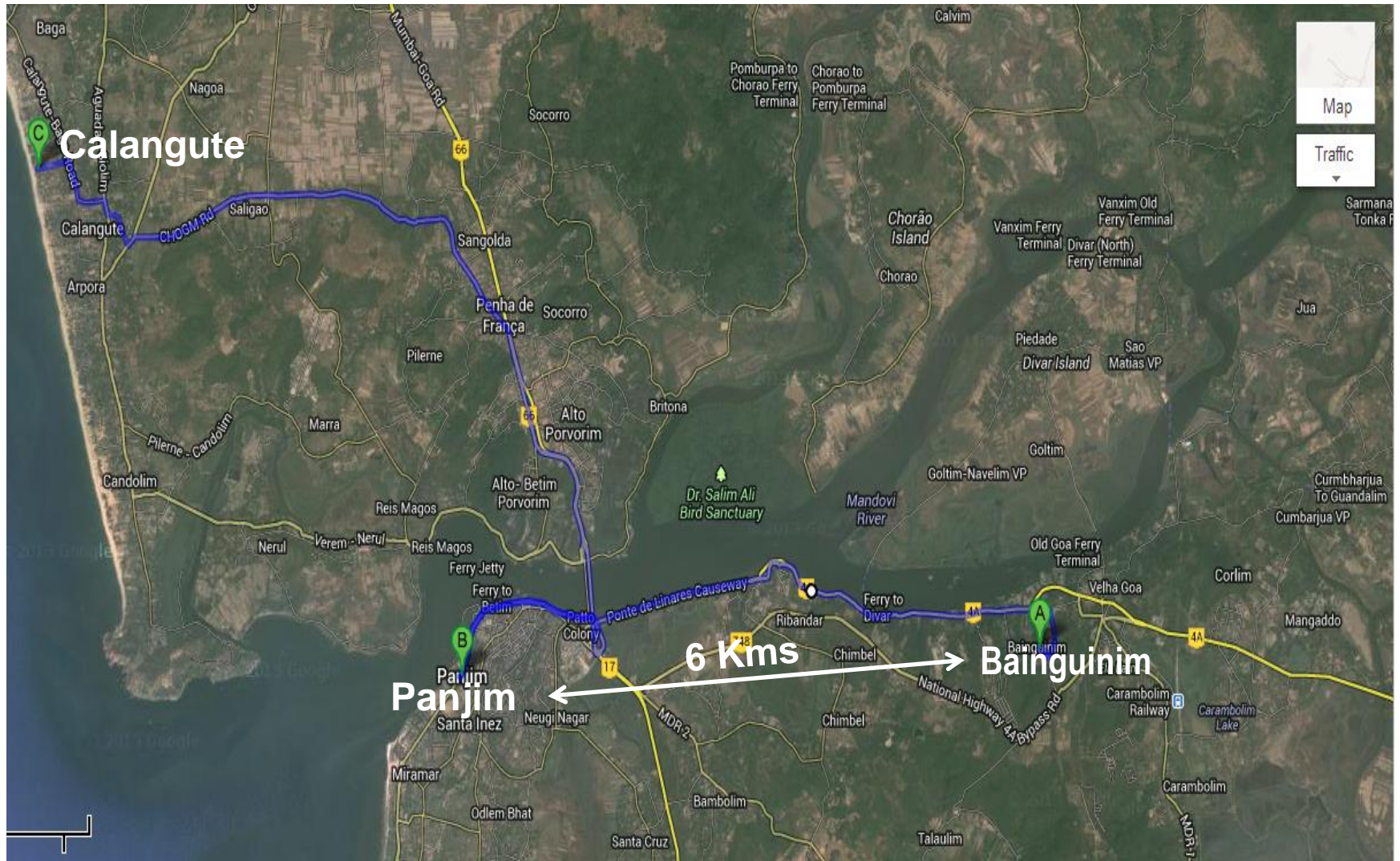
Project Brief :

- **Plot of land** admeasuring **68,262 Sq. Mtr.** falling in **S2 zone (S2 Zone is Residential Zone known as Settlement Zone)**
- **Address:** Village Bainguinim, Village Panchayat of Se old Goa, District North Goa.
- Distance from Panjim City : **Approx. 6 kms,**
- Distance from Calangute Beach : **Approx. 20 km**

Residential Scheme @ Bainguinim, Goa

Village Bainguinim, North Goa

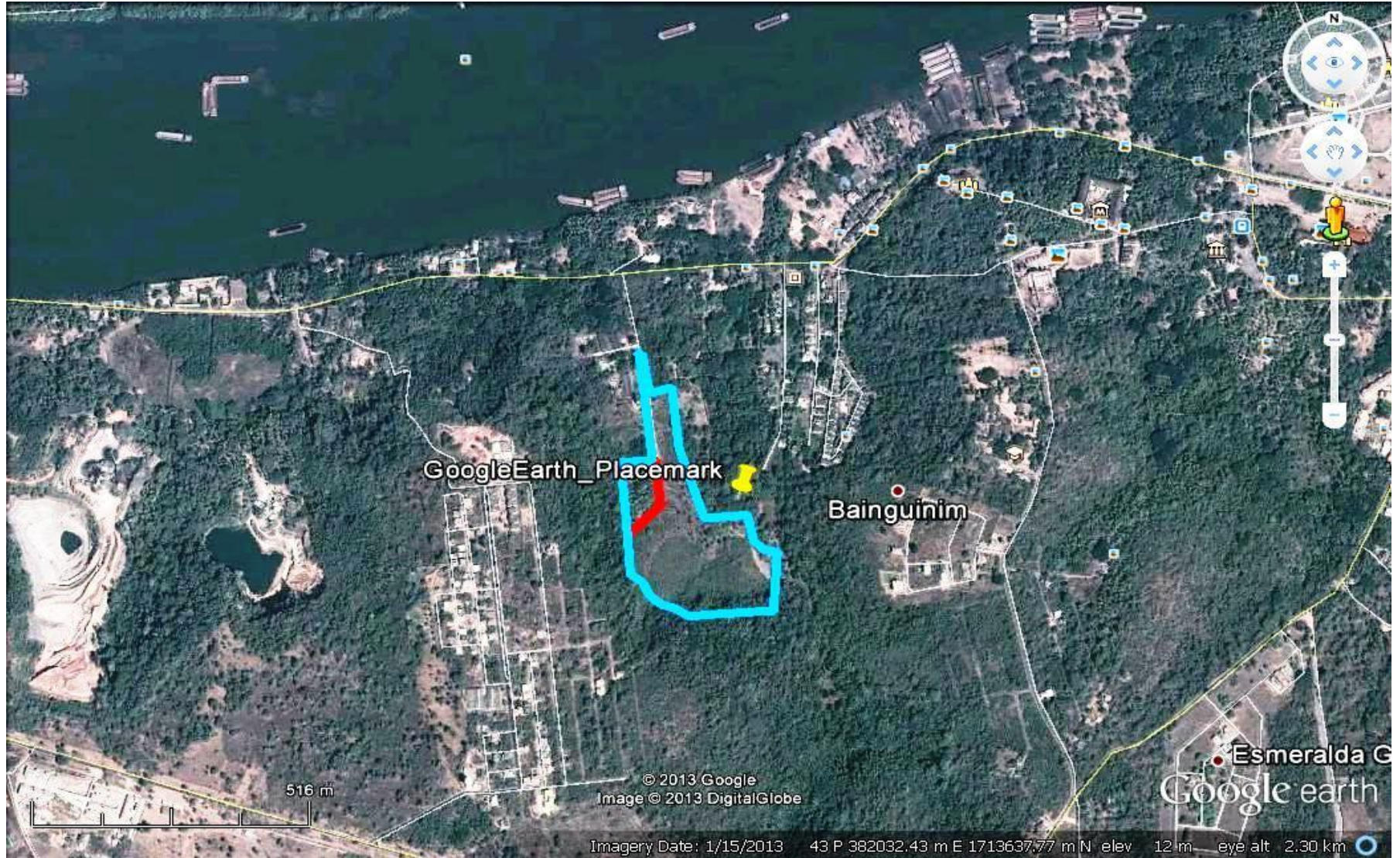
Location Map :



Residential Scheme @ Bainguinim, Goa

Village Bainguinim, North Goa

Location Map :



Residential Scheme @ Bainguinim, Goa

Village Bainguinim, North Goa

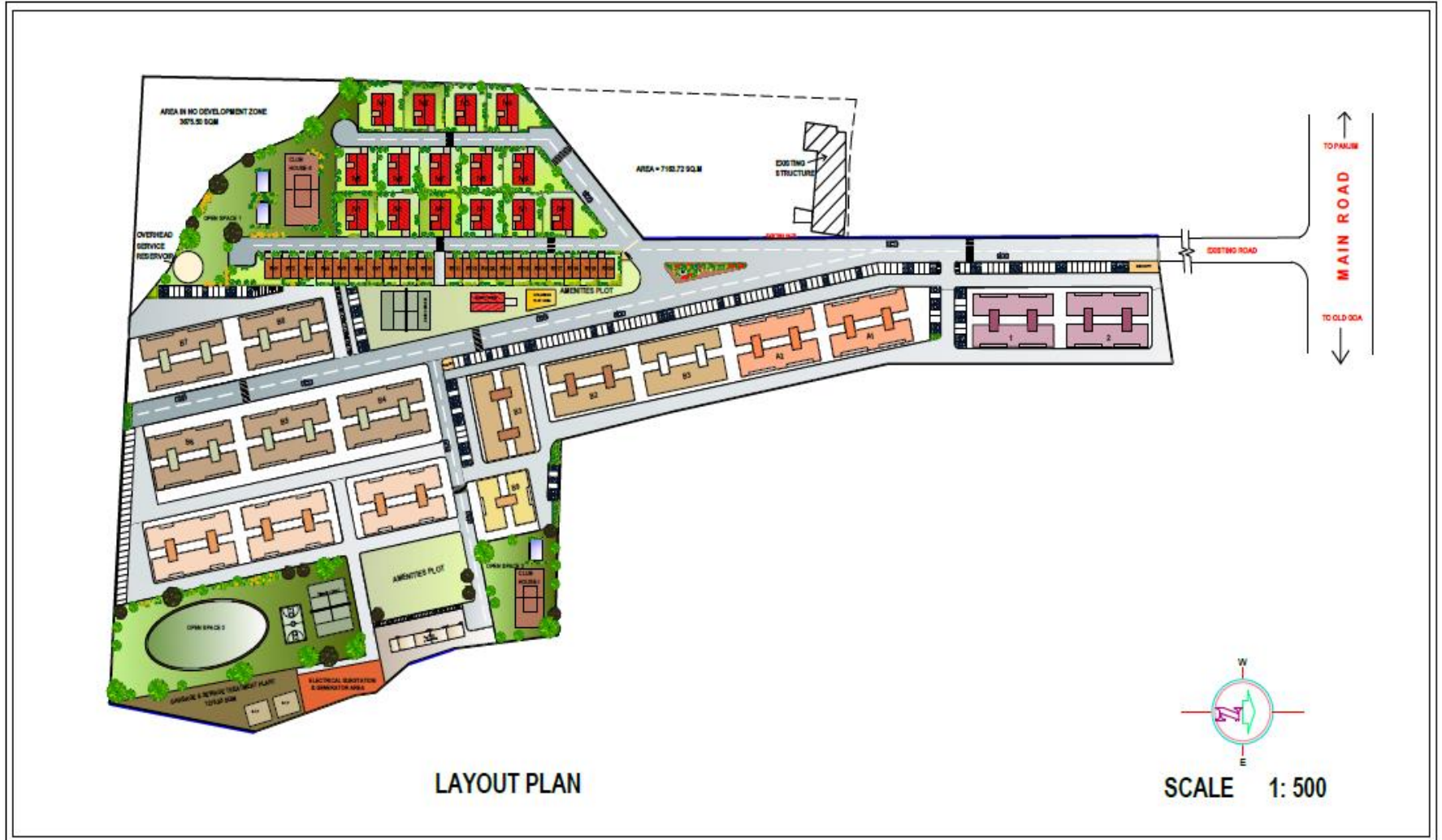
Project Planning:

- 5-6 lakhs sft of Villa's and Residential Scheme with 20,000 sft of Commercial Buildings
- Project of 1, 2, 3 BHK, Row Houses and Independent Villas
- Club House and other amenities
- Bungalow and residential scheme, estimated project period approx. 5 - 6 years. (commercial is permissible and taken for approx. 2000 Sq. Mtrs.)

Residential Scheme @ Bainguinim, Goa

Village Bainguinim, North Goa

Layout Plan :



Residential Scheme @ Bainguinim, Goa

Village Bainguinim, North Goa

Aerial View :



Residential Scheme @ Bainguinim, Goa

Village Bainguinim, North Goa

Aerial View :



Residential Scheme @ Bainguinim, Goa

Village Bainguinim, North Goa

Aerial View :



Residential Scheme @ Bainguinim, Goa
Village Bainguinim, North Goa

Aerial View (Night View) :



Residential Scheme @ Bainguinim, Goa
Village Bainguinim, North Goa

Aerial View (Night View):



Residential Scheme @ Bainguinim, Goa
Village Bainguinim, North Goa

Elevation of Building 1 & 2:



Residential Scheme @ Bainguinim, Goa
Village Bainguinim, North Goa

Elevation of Building A1 & A2:



Residential Scheme @ Bainguinim, Goa
Village Bainguinim, North Goa

Elevation of Building B1 to B6:



Residential Scheme @ Bainguinim, Goa
Village Bainguinim, North Goa

Row-Houses :



Residential Scheme @ Bainguinim, Goa
Village Bainguinim, North Goa

Independent Villa :



Residential Scheme @ Bainguinim, Goa
Village Bainguinim, North Goa

Club Houses :



Plotting Scheme of BCIPL @ Nashik

Village Bhilmal, Taluka –Trimbakeshwar, District - Nashik

Plotting Scheme at Village Bhilmal

- Plotting Scheme of **43 Plots on 20 Acre land.**
- Plot Size of **10 Gunthas and 20 Gunthas.**
- Fencing to Individual Plots and entire layout.
- Provision of Road, Street Lights, Water and Electricity.
- Club House and Children Play Area.

Plotting Scheme of BC IPL @ Nashik

Village Bhilmal, Taluka –Trimbakeshwar, District - Nashik

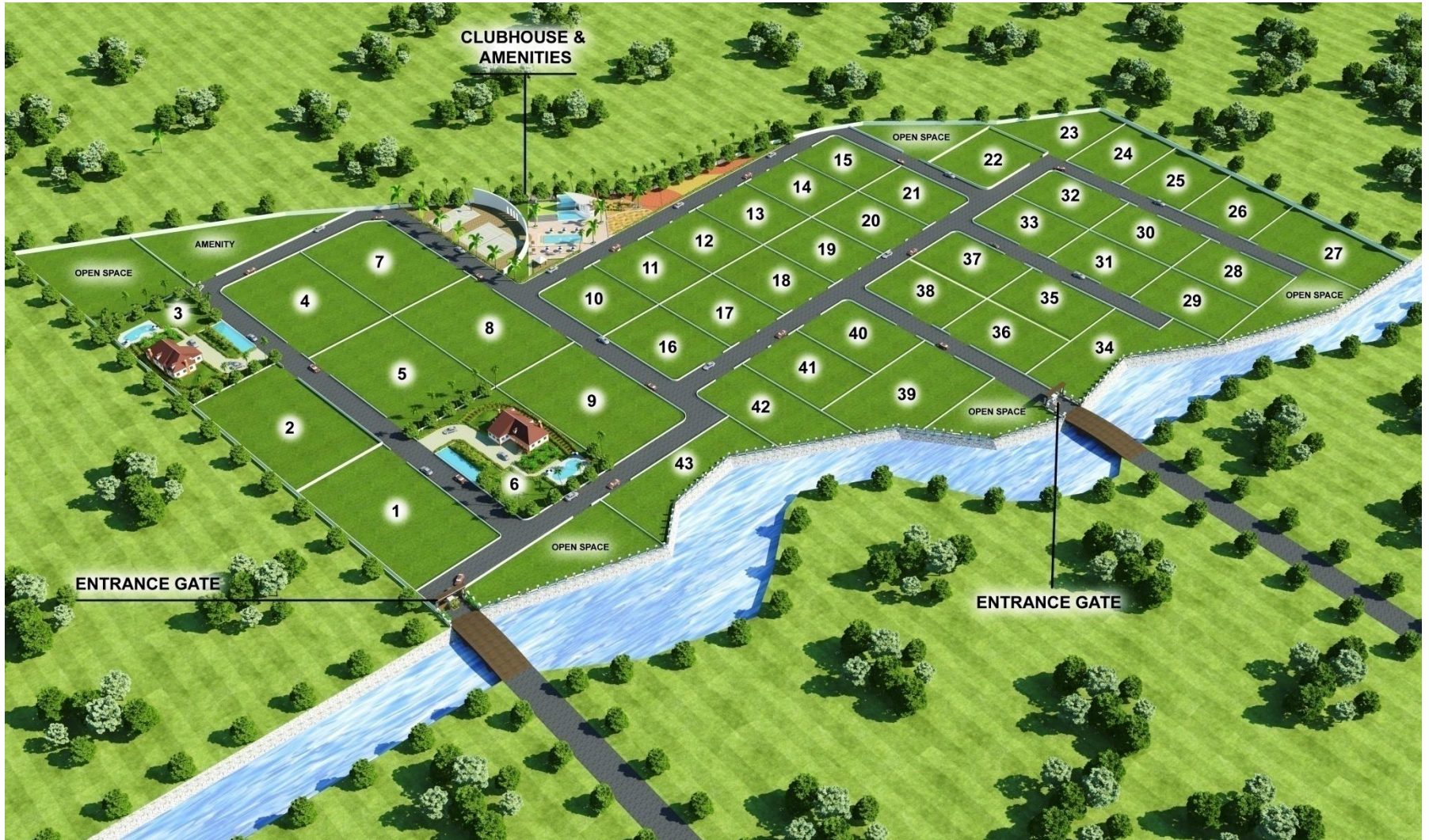
Layout of Plotting Scheme :



Plotting Scheme of BCIPL @ Nashik

Village Bhilmal, Taluka –Trimbakeshwar, District - Nashik

Aerial View Option 1:



Plotting Scheme of BC IPL @ Nashik

Village Bhilmal, Taluka –Trimbakeshwar, District - Nashik

Aerial View Option 2 :



Plotting Scheme of BCIPL @ Nashik

Village Bhilmal, Taluka –Trimbakeshwar, District - Nashik

Entrance :



Plotting Scheme of BCIPL @ Nashik

Village Bhilmal, Taluka –Trimbakeshwar, District - Nashik

Proposed Farm House Plan (Option 1):



Plotting Scheme of BCIPL @ Nashik

Village Bhilmal, Taluka –Trimbakeshwar, District - Nashik

Proposed Farm House Plan (Option 2):



Plotting Scheme of BCIPL @ Nashik

Village Bhilmal, Taluka –Trimbakeshwar, District - Nashik

Proposed Club House & Amenity Area Option 1 :



Plotting Scheme of BCIPL @ Nashik

Village Bhilmal, Taluka –Trimbakeshwar, District - Nashik

Proposed Club House & Amenity Area Option 2 :



Mixed Used Development Of 300 Acres Nashik

Take a pause ...



Mixed Used Development Of 300 Acres Nashik



PROJECT AT A GLANCE

LAND DESCRIPTION:

Total Land Area : 300 Acres of contiguous



Land of temples

Mixed Used Development Of 300 Acres Nashik



About Our Location:

Surrounded by Brahmagiri & Anjineri Parvat, Birth place of God Hanuman.

Distances :

Trimbakeshwar – 06 Km

Nashik – 25 Km

Mumbai – 200 Km

Pune – 235 Km

Shirdi – 115 Km

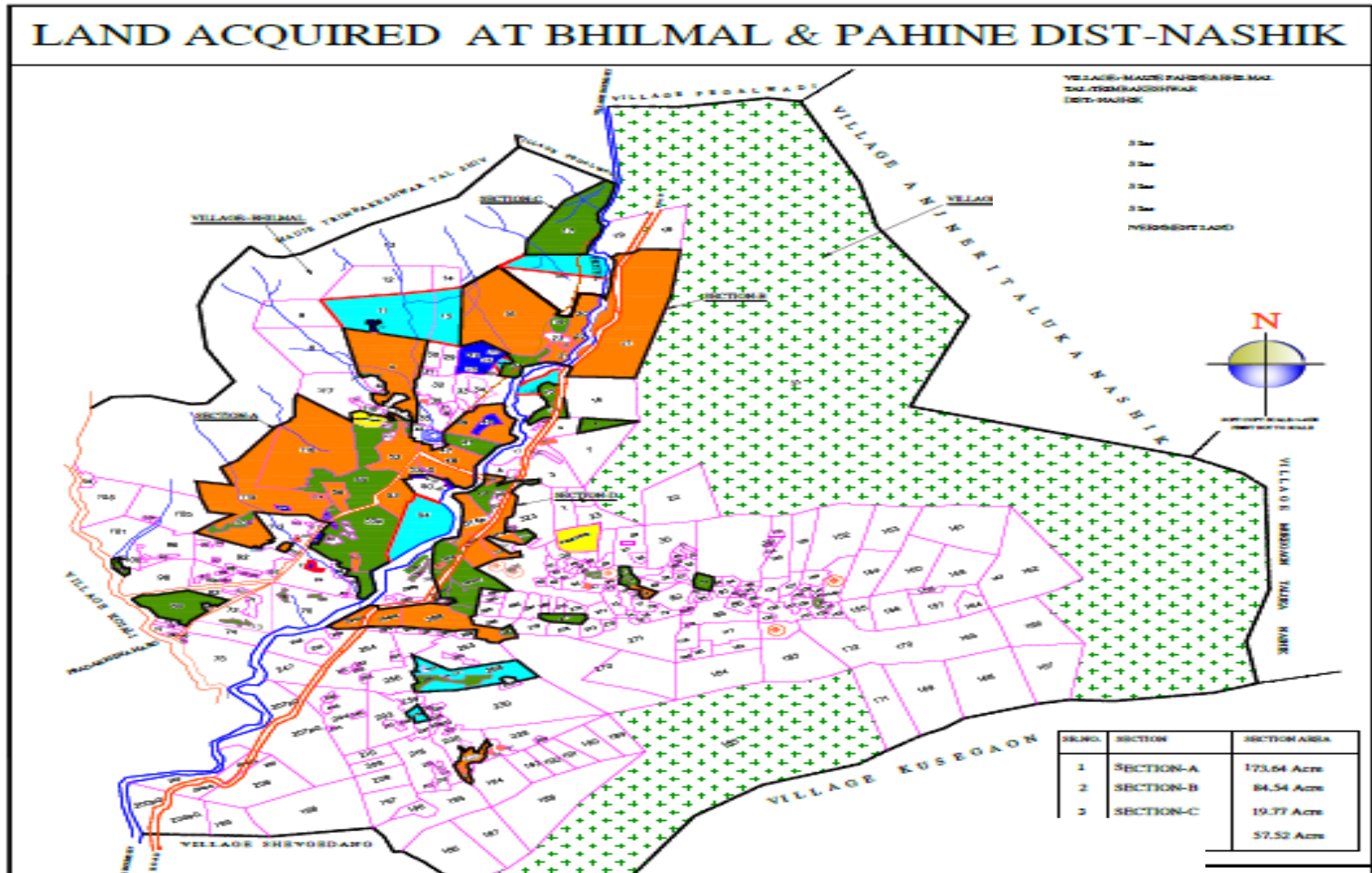
Aurangabad – 115 KM



Providing Sustenance

Mixed Used Development Of 300 Acres Nashik

Opportunity at Nashik : Land Map



Mixed Used Development Of 300 Acres Nashik

